



PWM Solar charge controller

NEW LandStar series



New LandStar series is Epsolar's new generation programmable solar charge controller. All the models adopt aluminum heat sink which enables the reliability in high temperature environments. RS-485 connects to a remote meter or PC for real-time monitoring, custom setting and control etc.



Application:

- ◆ Solar home system
- ◆ Solar lighting system
- ◆ Solar road signals
- ◆ Solar surveillance
- ◆ Solar RVs and boats
- ◆ Small solar power station

Model overview:

LS1024B
LS2024B
LS3024B
10A,20A,30A
12/24V

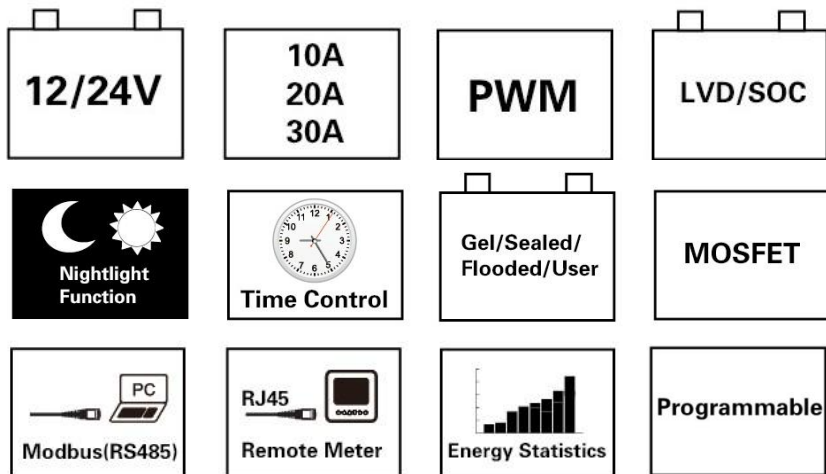


Features:

- ◆ Three system voltage configuration : 12V, 24V or 12V/24V auto work
- ◆ High efficiency PWM charging with temperature compensation
- ◆ 3 LEDs shows PV charging, battery and load status
- ◆ External temperature sensor interface
- ◆ RS-485 bus communication
- ◆ Open standard Modbus communication protocol
- ◆ Software update function

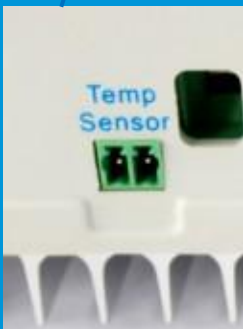
More powerful function via MT50 or PC

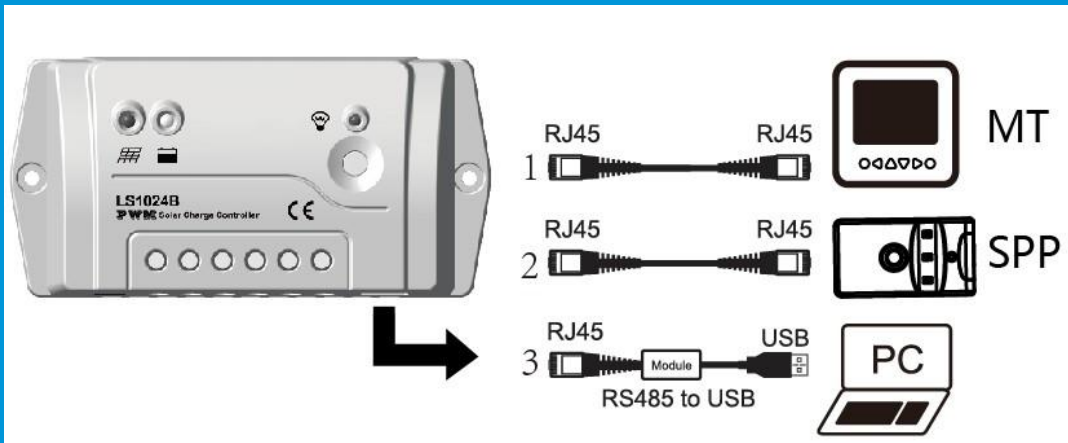
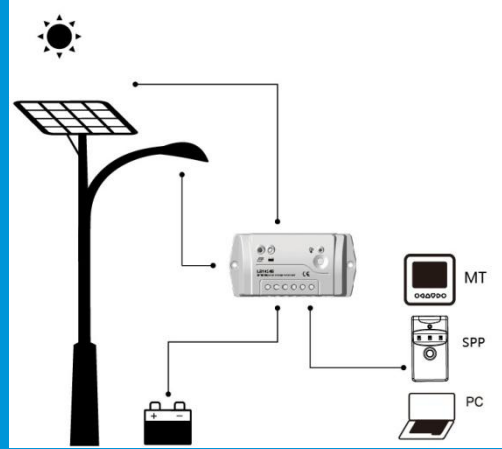
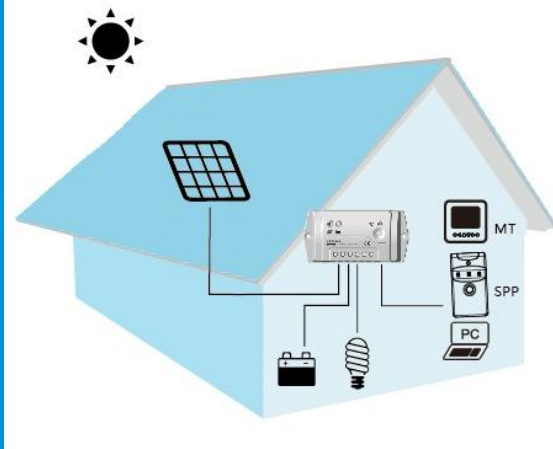
- ◆ Diversified load control modes : Manual, Light ON/OFF, Light ON+ Timer, Time Control
- ◆ Battery type option: Gel, sealed, flooded and USER
- ◆ Real-time monitor
- ◆ Programmable parameters
- ◆ LVD or SOC load disconnect function
- ◆ Energy statistics function



Electronic protections:

- ◆ PV short circuit
- ◆ Battery Over discharge
- ◆ Load overload
- ◆ PV reverse polarity
- ◆ Battery reverse polarity
- ◆ Overheating
- ◆ Battery overcharge
- ◆ Load short circuit

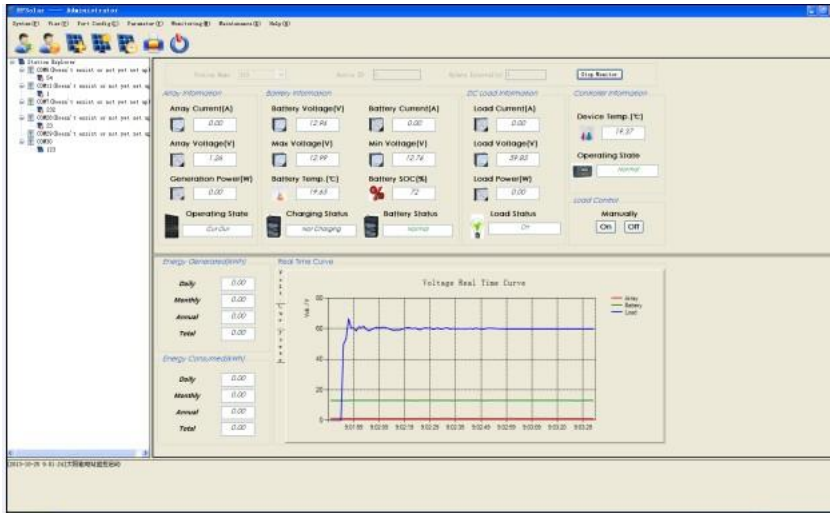




Optional accessories :

<p>Remote meter MT50</p>	<p>Remote temperature sensor RTS300R47K3.81A</p>	<p>Communication cable CC-USB-RS485-150U</p>	<p>Super parameter programmer SPP-01</p>

PC software:



Technical specifications :

Model	LS1024B	LS2024B	LS3024B
Nominal system voltage	12 / 24V auto work		
Rated battery current	10A	20A	30A
Rated load current	10A	20A	30A
Maximum battery voltage	50V		
Grounding	Common positive		
Self-consumption	8.4mA(12V), 7.8mA(24V)		
Temp. compensation	-3mV/°C/2V (25°C ref)		
Equalize charging voltage	Sealed: 14.6V, Flooded: 14.8V, User-defined: 9~17V		
Boost charging voltage	Gel: 14.2V, Sealed: 14.4V, Flooded: 14.6V, User-defined: 9~17V		
Float charging voltage	Gel /Sealed /Flooded: 13.8V, User-defined: 9~17V		
Low voltage reconnect voltage	Gel /Sealed /Flooded: 12.6V, User-defined: 9~17V		
Low voltage disconnect voltage	Gel /Sealed /Flooded: 11.1V, User-defined: 9~17V		

* Technical data for 12V system at 25°C

Model	LS1024B	LS2024B	LS3024B
Dimension	138.6x69.3x37mm	159.6x81.4x47.8mm	200.6x101.3x57mm
Mounting holes	126mm	147x50mm	190x70mm
Terminal	4mm ²	10mm ²	10mm ²
Net weight	0.13kg	0.3kg	0.5kg

Environmental Specification	
Working temp.	-35°C~+55°C
Storage temp.	-35°C~+80°C
Humidity	≤95% (NC)
Enclosure	IP30

